

Operating manual for *ARISMAC Mover*

Version 4.0.1

A brief history

It is useful to learn a little of the history of the Australian Racing Investment System (*ARIS*) in order to better understand what I set out to achieve and why. Please take a few moments to read this as it will certainly make your use of *ARISMAC Mover* a lot clearer and easier.

There have always been in my mind two very distinct parts to successfully wagering on horse races. Firstly a likely winner must be selected and then the correct amount of money must be invested on the bet. As I pointed out in my book "***Punting for Profit***" published in 1993, there are a fair number of experts who tip likely winners.

However, there very few financial advisors who offer the punter advice as to the correct amount to bet in order to show a regular profit. I wrestled with this problem for some years and it was finally the emergence of powerful computers that gave me the tools I needed to solve the problem.

After publishing the *ARISMAC Mover Tables* many people were disappointed because I did not also provide racing tips to use with *ARIS*. I still don't. But I am now willing to reveal a very successful method of tipping your own winners, which you can use from anywhere in the world that is connected to the internet.

No data bases, no heavy number crunching. It takes less than ten seconds to pick the horse most likely to win and place a bet. I have named the method *ARISMAC Mover*.

***ARISMAC Mover* operates on the proven principle that driven by "smart money" the win dividend of more than one in every four (25%) of all winners shortens considerably in the 15 minutes before race time. *ARISMAC Mover* provides a tool to quickly and accurately detect where the "smart money" is being wagered.**

I must also confess that I have repeatedly sledged people who claim to use "inside information", "secret formulas" and more lately software programs that tip an amazing number of winners. Many tipsters appear to have 20-20 rear view vision but have problems picking anything beyond the end of their long noses.

If these so called "tipsters" are so damned good what the hell are they selling their "secrets" for? Why not keep their mouths shut, sit back quietly and pull a substantial weekly income off the TAB for working a dozen hours a week?

If you think this also applies to me you are quite right. The fact is that I do not need the income any more but I do need to generate a cash flow for cancer patient support. All income received from *ARISMAC Club* memberships will be used to establish an *ARISMAC Mover Operating Bank* from which the profits will go to:

System requirements

ARISMAC Mover Club membership and ARISMAC Mover Workbook - A\$100.00

Microsoft® Office Excel 2003

[Mozilla Firefox](#) internet web browser

[CLOX 2007](#) clock and alarm

[TABozbet](#) account

Please also see *Punting for Profit* in pictures at www.JarraBark.com/aris_pictures.html

© John F Macmahon 1993-2007. All rights reserved. Copying, publishing or distributing by any means without the express consent in writing of the copyright holder is prohibited by law.

Getting started

Firstly open MS Excel™. Then select **Tools → Macro → Security** on the top line toolbar. Then select the **Security Level** tab and click the **Medium** check box and press **OK**. You **MUST** carry out this step or ARISMAC Mover can not operate.

Next open your ARISMAC Mover Workbook. A **Security Warning** screen will appear. You **MUST** select **Enable Macros** or ARISMAC Mover will not be able to calculate selection points and race times.

The SETUP screen

Open your ARISMAC Mover Workbook and select the SETUP tab at the bottom of the Excel workbook screen.

It should display like this:

Name Box	A	B	C	D
1	ARISselect SETUP SCREEN			
2	Version 4.0.1© J.F. Macmahon 1993-2007			
4	PASSWORD	*****	ARIS #	
5	EXPIRY DATE	08-May-07	12	
7	OPERATING START DATE	01-Jan-07	ARIS x	
8	LAST MEETING DATE	19-Apr-07	1	
10	LLS - GLOBAL	12	1.00	
14	BANK MULTIPLIER	1	2.00	
15			3.00	
16	STARTING BANK	1,189	4.00	
17	TODAY'S TOTAL BETS		7.00	
18			12.00	
19	INVESTED	5,129	20.00	
20	RETURNED	7,076	35.00	
21	PROFIT	1,947	60.00	
22			100.00	
23	AVERAGE BET	14.25	165.00	
24			280.00	
25	PROFIT ON TURNOVER	38%	500.00	
26	ANNUAL RETURN	553%		
27				
28	TOTAL RACE MEETINGS	36		
29	TOTAL BETS	360		
30	TOTAL WINNERS	79		
31	% WINNERS	22%		
32	TOTAL PLACES	184		
33	% PLACES	51%		
34				
35	PLACE (WA, NT, NZ, etc)	WA	Bank	
44	DAYLIGHT SAVING?	NO	\$1,189	
45	OZBET ON DLS?	NO		

Entering SETUP data

Now enter your password in Cell **B4**. This activates the ARISMAC Mover Workbook and displays current data.

Next decide which LLS Table you intend to use or model by entering any number from 4 - 20 in Cell **B10**. A multiplier which applies to the selected LLS Table may be entered into Cell **B11**.

© John F Macmahon 1993-2007. All rights reserved. Copying, publishing or distributing by any means without the express consent in writing of the copyright holder is prohibited by law.

The LLS Table selected is displayed to the right of the setup table and on the SELECT screen. Note the required Operating Bank for each different table. Try modelling any or all of the available 16 LLS Tables and note the changes to the INVESTED, RETURNED and PROFIT displays.

Finally choose from **ACT, NSW, NT, NZ, QLD, SA, TAS, VIC, WA** and enter into cell **B35**. Then enter **YES/NO** to answer the questions “Is your place on daylight saving?” and “Is the Western Australian based TABozbet on daylight saving?” in cells **B44** and **B45**.

Setting race start times

ts RACE SCHEDULE FOR Thursday 22/03/2007 You are logged in [logout]

Status	Start time	Race			Accept	Conditions	Race name	Dist.	Bet Types
Released	11:00	MR	1	Totes	Results	6 HCP	AAPT BENDIGO	1612	
Released	11:05	SRX	1	Totes	Results	14 MDN HCP	SLICKPIX	1000	
Released	11:10	BT	1	Totes	Results	10 CO M PACE	SUPPORT HARNESS	1609	
Released	11:20	MTX	1	Totes	Results	6 4YO+ M C/C2	RITCHIE DAVIDSON	2205	
Released	11:25	BR	1	Totes	Results	16 3YO MDN SW	CROWN GOLD PLATE	900	
Open	20:46	AD	11	Totes	Results	8 GRADE 5	SURGICAL SOLUTNS	515	
Open	20:49	CD	9	Totes	Results	10 GRADE Y5	JESSICA SHEPHERD	405	Otet
Open	20:50	OD	10	Totes	Results	10 GRADE 5	MURRAY STARTUP	461	
Open	20:55	BD	10	Totes	Results	10 GRADE 5	KEITH STERNBERG	520	
Open	21:05	CD	10	Totes	Results	9 GRADE Y1	AMANDA GEORGE	302	Otet
Open	21:20	CD	11	Totes	Results	10 GRADE Y4 & 5	JOYCE VANDENBERG	492	Otet

[Back to top](#)

Entering the race number (MR1, SR3, AR2, BR6, etc) in cell **A1** of the **SELECT** screen will display the start time of the race. The race times for the day must be first entered into ARISMAL Mover.

Open the Oz Bet **All Races** screen in your Mozilla Browser. Click and drag the mouse to select all races from the first entry in the **Status** column to the last entry in the **Bet Types** column and press **[Ctrl+C]** to copy the data to the clipboard.

Move the mouse to make the ARISMAL Mover Workbook active and press **[Ctrl+Shift+T]**. This runs a macro which enters all race start times into ARISMAL Mover and then saves your workbook.

Calculating selections with ARISMAC Mover

The screenshot shows a desktop environment with three main windows:

- Windows Date and Time Properties:** Located at the top center, displaying a digital clock for Perth, Adelaide, Melbourne, and Auckland. The time is 10:25:00.
- TABozbet Website:** Displays a horse race for MORNINGTON (MR) FRANKSTON RSL (ZY0 C&G MDN SW) starting at 10:30. The race details include distance (1210m), track (GOOD3), and weather (FINE). A table of runners is visible with columns for runner name, odds, and other statistics. Runner No. 4, FENTON HALL, is highlighted.
- Microsoft Excel - ARISSelect_2Day:** A spreadsheet showing the results of an ARISMAC Mover scan. The data is as follows:

NO	NAME	WIN	PTS	NO	ARIS #
4	FENTON HALL	6.30	13		12
1	AGARKAR	14.20	11		ARIS x
10	TESTA JESTA	4.00	11		1
11	THE OSCAR	15.90	11		1.00
2	ARAZAMATAZ	15.50	11		2.00
12	WHITTINGHAM	23.10	11		3.00
7	MR CHAIRMAN	9.80	10		4.00
5	GREATWALL OF CHI	5.00	10		7.00
9	RICO	30.70	9		12.90
3	CAROUSEY	5.80	9		20.00
6	LITTLE DRAC	43.00	9		35.00
8	NEXT SHOT				60.00
					100.00
					165.00
					280.00
					500.00
					1,189.00
					Minimum

ARISMAC Movers designed to be used in the last **25 seconds** before race time. In those few seconds we will show you how we give all the runners a points rating. We then decide whether **ARISMAC Mover** has revealed a likely winner and if so, lay a bet. Although this does not sound like much time, in fact with a little practice and proper preparation 25 seconds is plenty of time to select a runner and lay a bet.

The computer screen layout is very important and both the correct **TABozbet** screen and **ARISMAC Mover** should be on display at least two minutes before race time. We also need an accurate clock which displays seconds on the desktop.

I use the **Windows Date and Time Properties** window which can be displayed by double clicking on the time at the bottom right of your screen. The above image shows how the completed computer desktop layout should look.

The web browser is displaying the race in the **TAB OzBet** web site and **ARISMAC Mover** is displaying the results of a scan 25 seconds before race time. This indicates that **No 4 FENTON HALL** is an ARISMAC Mover selection. The next bet will be **\$1.00** so this amount has been entered in the **SEND BET** window.

TABozbet window does not delete this entry. The amount will therefore remain in the **SEND BET** window until the bet is either sent or you move onto the next race without betting.

We are now ready to select the information that **ARISMAC Mover** will use to determine if there is a horse that qualifies as an **ARISMAC Mover** selection. The next two images show how the data is selected from certain fields in the browser window and then transferred to **ARISMAC Mover**.

The **TABozbet** screen on display above is the **MARKET Mover** screen. It should only ever be refreshed by using the **Refresh** button at the top right hand corner of the screen. **DO NOT** use the browser refresh button.

The **MARKET Mover** screen displays the information that **ARISMAC Mover** needs to determine the points ranking of all the runners in the field. We will first select the data we need from the browser window.

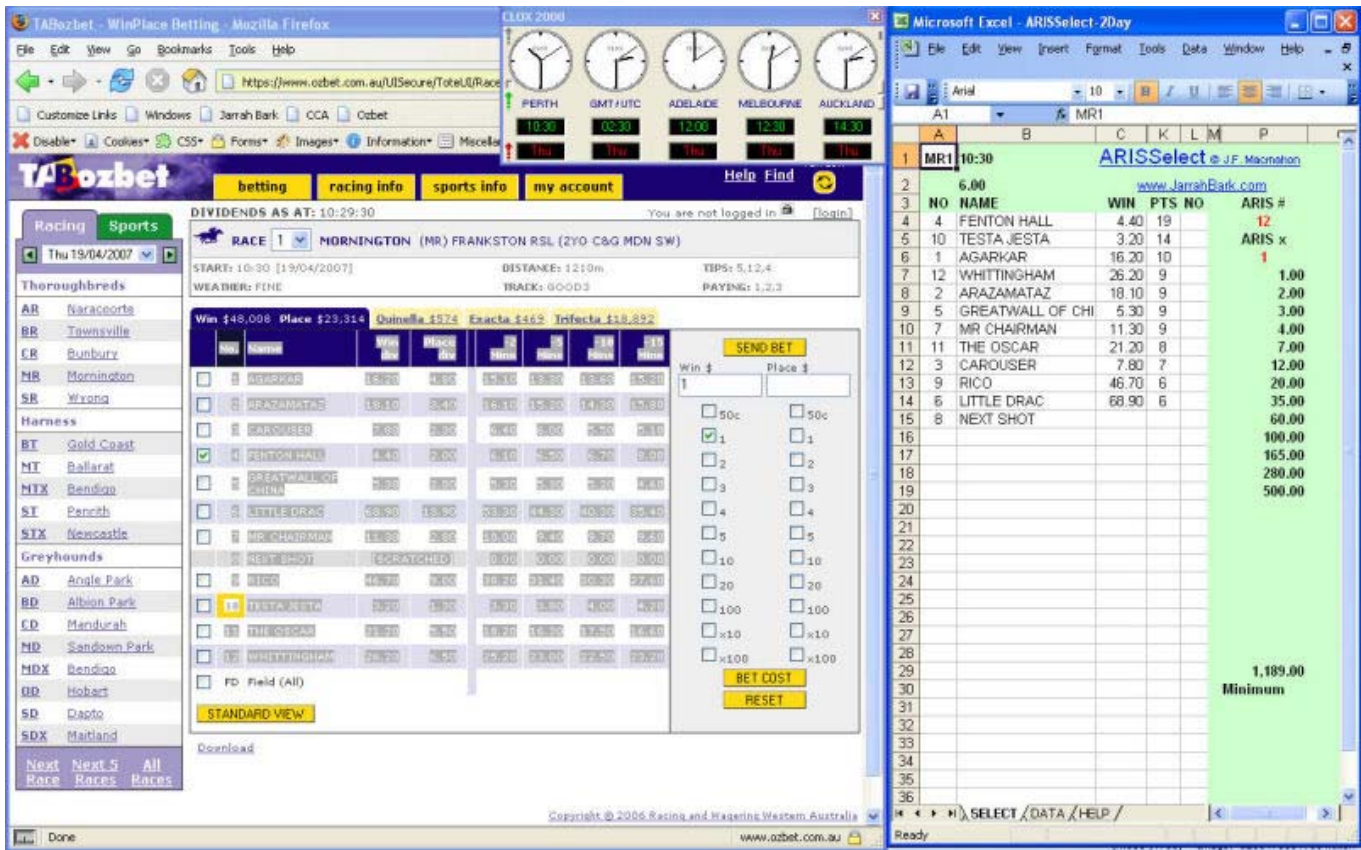
It is important to select **only** the fields shown below left, which means running the mouse pointer from immediately **after** the last dividend on display in the **-15 mins** column up to immediately **before** the **No** in the header of the horse number column. When these fields and **only** these fields are selected hold down **Ctrl** and press **C** [**Ctrl + C**]. This copies these fields onto the hidden Windows clipboard.

Now use the mouse to make the **ARISMAC Mover Workbook** the active window as shown below right and press [**Ctrl+Shift+S**]. This runs a hidden macro which will paste the information into the **SELECT** window and calculate the **ARISMAC Mover Points** score of each runner in the race. These points appear in column **K**.

At **25 seconds** before race time use the refresh button at the **top right** of the **TABozbet** screen to obtain the latest betting information. Then repeat the copy and macro run function just described to calculate and display the latest **ARISMAC Mover points** awarded to each runner in column **K**.

Check the **DIVIDENDS AS AT:** at the top left of the screen to make sure the dividends on display are as at **30 seconds** before race time. If not hit the **Refresh** button again until you get the right result. Again copy and calculate the **ARISMAC Mover Points** in the **SELECT** screen. Practice and experience makes this dead easy.

The scan at 25 seconds before race time showed that **No 4** had shortened from **6.30** to **4.40** with a rush of last minute betting and **ARISMAC Mover** has allocated **19 ARISMAC Mover Points** to this horse. All that is left to do now is to tick the box alongside **No 4** in the **TABozbet** window and press **SEND BET**. An acknowledgment that the bet has been received is then displayed.



Checking the results

In order to show a profit using the **ARISMAC Mover** it is **absolutely essential** that the result of the previous race is known **before** a bet on the following race selection can be calculated from the **ARISMAC Mover**. That is if a winner **IS** selected the next bet is the first or lowest amount on the **ARISMAC Mover** that is being used. If a winner is **NOT** selected then the value of next bet is the next amount on the on the **ARISMAC Mover**.

Therefore the first bet using the **LLS12 Table** is **\$1-00**. If this horse does not win and return a dividend the second bet on the same table will be **\$2-00**.

In our example the previous selection was a winner so we bet **\$1.00** on **FENTON HALL**. Look at column **S** in the **ARISMAC Mover DATA** screen to clarify this point.

After the race starts the **TABozbet MARKET Mover** window changes to look like this. You may need to use the **Refresh** button several times before this screen appears. Then click on **RESULTS** on the left.

RESULTS:

No.	Name	Win div	Place div	Rider	Bar	Hcp
1	AGARKAR	19.20	5.50	M ZAHRA		1 57
2	ARAZAHATAZ	21.40	4.00	STEVEN ARNOLD		11 57
3	CAROUSEL	8.00	2.40	J DIDHAM		5 57
4	FENTON HALL	4.00	1.50	S KING		8 57
5	GREATWALL OF CHINA	5.30	2.00	D MOOR		3 57
6	LITTLE DRAC	84.70	14.30	M J GUTHRIE		2 57
7	MR CHAIRMAN	7.10	2.70	L MCGILL		4 57
8	NEXT SHOT	[SCRATCHED]		D ADAM		12 57
9	RICO	57.10	10.40	R D MARTIN		7 57
10	TESTA JESTA	3.70	1.40	L NOLEN		6 57
11	THE OSCAR	25.40	5.60	C SYMONS		9 57
12	WHITTINGHAM	27.20	6.30	C BROWN		10 57

Win \$63,882 Place \$29,902 Quinella \$750 Exacta \$722 Trifecta \$24,716

MARKET MOVERS

The next screen will look like this which shows that FENTON HALL did not run a place.

Race Results - Thursday 19/04/2007

You are logged in [name] [logout]

RACE 1 MORNINGTON (MR), FRANKSTON RSL (ZYQ C&G MDN SW) 10:30

TOTES: BETTING CLOSED AT: 10:31:09 [19/04/2007] NO OFFICIAL DIVIDENDS STARTERS: 11

Win & Place					Novelty Pools			
Placing	Number	Name	Rider	Win	Place	Pool	Result	Div
1st	5	GREATWALL OF CHINA	D MOOR	5.20	2.00	QUINELLA	5-10	7.40
2nd	10	TESTA JESTA	L NOLEN		1.40	EXACTA	5-10	18.00
3rd	7	MR CHAIRMAN	L MCGILL		2.70	TRIFECTA	5-10-7	134.20

Betting Pool: WIN \$62,891; PLACE \$30,003; QUINELLA \$750; EXACTA \$722; TRIFECTA \$24,716

Scratched: 8; NEXT SHOT

About five to seven minutes after the start of the race refreshing the above screen will produce the results screen shown above. As you can see in this case **ARISMAC Mover** did not pick a winner this time. We now have two or three minutes to check the **ARISMAC Mover** for the value of the next bet and update the **ARISMAC Mover Operations Records** on page 2 of the **ARISMAC Mover Worksheet**. After a little practice you will discover that this is plenty of time.

Having not picked a winner the current **ARISMAC Mover** sequence of bets comes to an end and the next bet will be **\$2-00** on the **LLS128 ARISMAC Mover Table**.

Updating the records

Keeping accurate records of all your **ARISMAC Mover** operations is essential in order fine tune and get the very best from **ARIS**. The same records might also prove to be very useful if you need to prove to the Taxation Office that you won the money on the horses and so therefore you **DO NOT** owe them any income tax.

Having laid a bet it is time run the third **ARISMAC Mover Macro**. Press **[Ctrl+Shift+Q]**. This transfers the bet to the **DATA** Sheet and displays the value of the next bet. As before the **ARISMAC Mover Workbook** is automatically saved.

	A	B	C	D	E	M	O	S	U	W	X
1	ARISSelect Operating records				LLS	X	BET	RETURN	PROFIT	BALANCE	
2					12	1	5,129	7,076	1,947	3,136	
4	DATE	RACE	NO	HORSE	DIV	PTS	RES	BET-W	DIV-W	RET	BANK
357	Wed, 18 Apr 07	BR3	3	EXERTION	2.70	19	1	3.00	2.70	8.10	3,141.90
358		AR3	3	KIPCHIRCHIR	3.60	22		1.00			3,140.90
359		BR4	7	FINN O'REILLY	7.20	23		2.00			3,138.90
360		BR7	11	CAPELINE	3.90	18		3.00			3,135.90
361		AR7	1	MADAM LUSH	2.50	18	1	4.00	2.50	10.00	3,141.90
362		AR8	13	FINELLA	2.50	20	2	1.00			3,140.90
363	Thu, 19 Apr 07	MR1	4	FENTON HALL	4.40	19		2.00			3,138.90
364								3.00			

In this case **FENTON HALL** shortened to from **4.80** to **4.40** after we placed our bet. So we corrected the win dividend in the **DATA** screen. This would obviously have been essential if the selection had been a winner. You will also note that the value of the next bet as automatically been displayed..

Conclusion

That's it. Simply do this with every bey you lay regardless of whether it wins or not and you will have accurate records which will prove to be invaluable in fine tuning **ARISMAC Mover** for maximum profits.

Next return to the **TABozbet** screen and display the **MARKET Mover** screen for the next race you intend to bet on. Operating on **AR**; **BR**; **MR** and **SR** simultaneously usually provides a minimum of ten minutes between races. With a little practice this is adequate time to select a potential winner in the last 25 seconds before race time, lay a bet, find out the result, update the records and display the next race.

ARISMAC Mover Club members support at www.JarrahBark.com/forums/

Best wishes for a successful punting business.



John F. Macmahon

ARISMAC Mover OPERATIONS CHECK LIST		
MINUTES	IF	ACTION
RT 10		Select RESULTS screen
RT 3		Refresh RESULTS screen
	WIN	Note FIRST wager on ARISMAC Mover being used
	LOSS	Note NEXT wager on ARISMAC Mover being used
RT 2		Select NEXT FIVE RACES screen
		Select next race to be bet on
		Select MARKET Mover screen
		Enter NEXT wager in SEND BET screen
		Select ALL RUNNERS plus TOP TITLES on MARKET Mover screen
		Select ARISMAC Mover Workbook screen
		Press [CTRL+Shift+ S] to calculate selections and display in SELECT screen
		Enter Race Number (MR2, AR4 etc). Note possible ARISMAC Mover SELECTION
RT 0.25		Refresh MARKET Mover screen
		Select ALL RUNNERS plus TOP TITLES on MARKET Mover screen
		Select ARISMAC Move rWorkbook screen
		Press [CTRL+Shift+S]
		Confirm BET SELECTION
		Tick BET SELECTION in MARKET Mover screen
		Press SEND BET on SEND BET screen
		Note that TAB confirmation in green text that bet has been received
RT 0	BET	Press [Ctrl+Shift+Q] to post bet in DATA screen
	NO BET	Return to RT -2 above
NOTES	RT = Minutes before race time	